

QUPrint Instructions for MAC

Download the Mac Driver (To get full features):

Go to Ricoh website and download and install the Printer driver for your MAC OS version:

support.ricoh.com

Support and downloads | Ricoh Europe

MP C4504ex/C5504ex/C6004ex series Downloads | Ricoh Global

Global - English

MP C4504ex/C5504ex/C6004ex series

[Sign up : Software Release Notifications](#) [Important Notice](#) **Important**

Your OS

Mac OS X 10.12 (macOS Sierra)

[Choose other OS](#)

Select driver language English

Printer Driver

PPD Installer Ver.3.0.0.0 Released Date: 12/02/2018 **New!**

[Download](#)
(File Size : 18,010 KB)

This PPD installer is used to install a PPD (Postscript Printer Description) file on Mac OSX. PPD files contain descriptions of printer capabilities such as paper sizes, number of input trays and duplexing. Once the PPD file is installed on the system using the PPD installer, the PS driver that comes bundled with Mac OS X can use

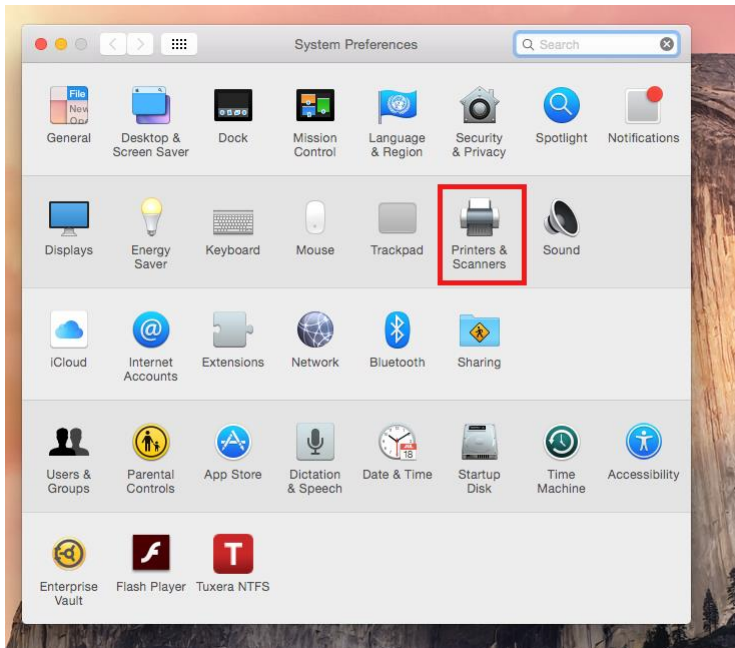
[History](#)

Software

How to Connect the Printer

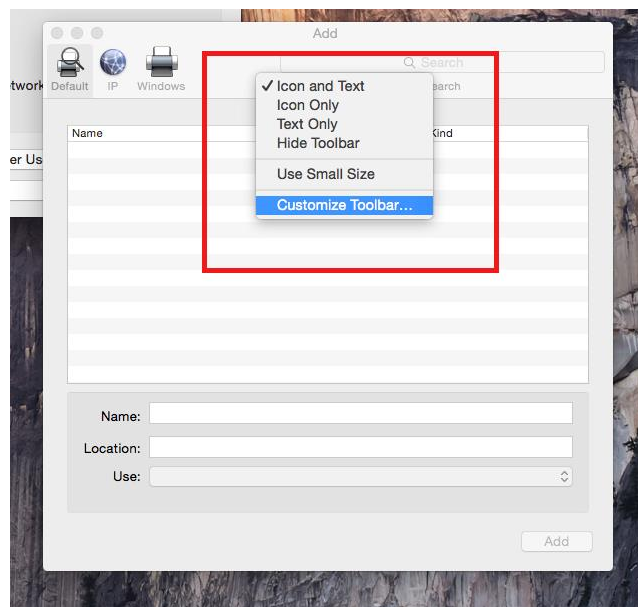
Step 1: Open **PRINTERS & SCANNERS** in the System Preferences

خطوة 1: افتح الطابعات والمسحات
من تفضيلات النظام



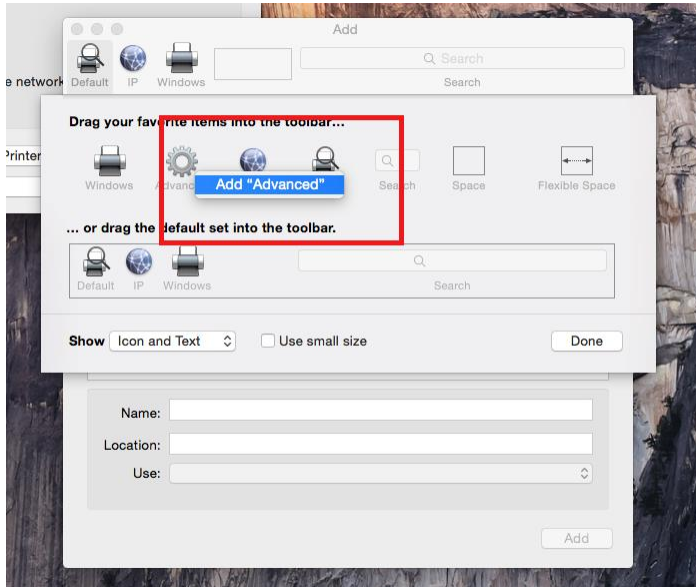
Step 2: Add a new Printer and Right Click the task pane and Choose **CUSTOMIZE TOOLBAR**

خطوة 2: إضافة طابعة جديدة وانقر على زر الفأرة الأيمن في جزء المهام واختر **Customize Toolbar**



Step 3: Right Click and Select **ADD ADVANCED** and click **DONE**

الخطوة 3: انقر بزر الفأرة الايمن واختر إضافة **ADVANCED** ثم انقر **DONE**



Step 4: Select Type: **WINDOWS PRINTER VIA SPOOLSS**

Url: **smb://myprint.qu.edu.qa/QUPrintSTMac**

Name: **QUPrintSTMac**

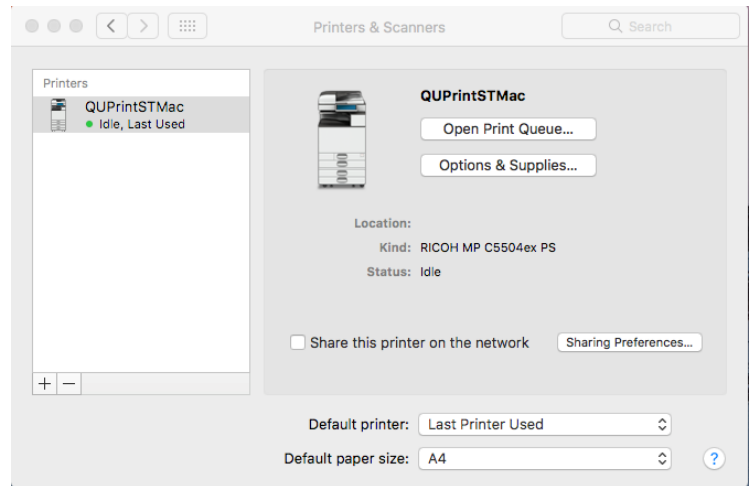
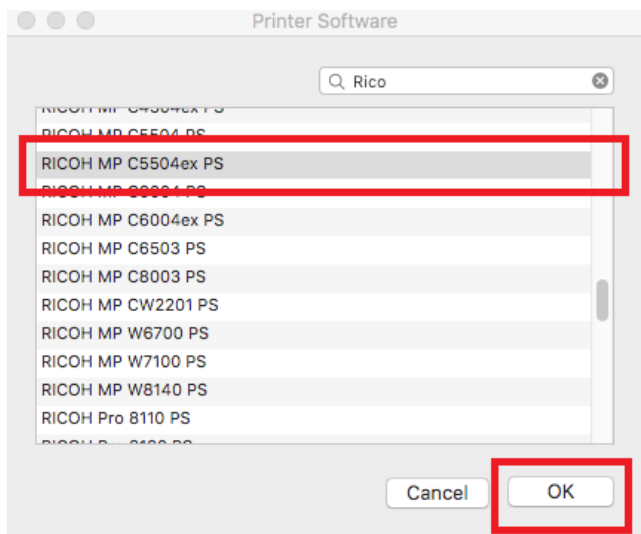
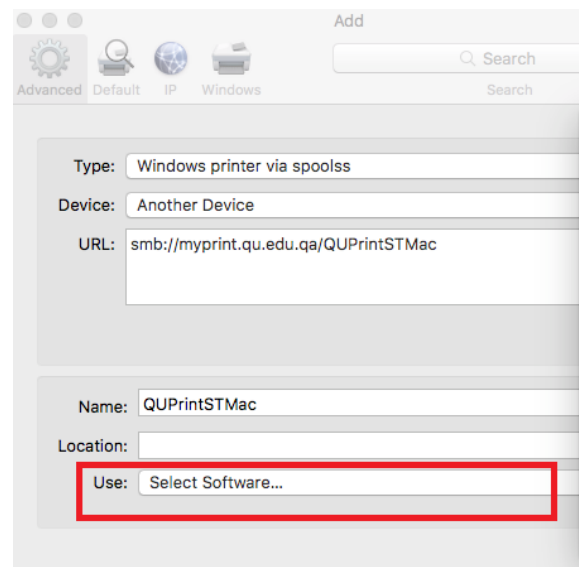
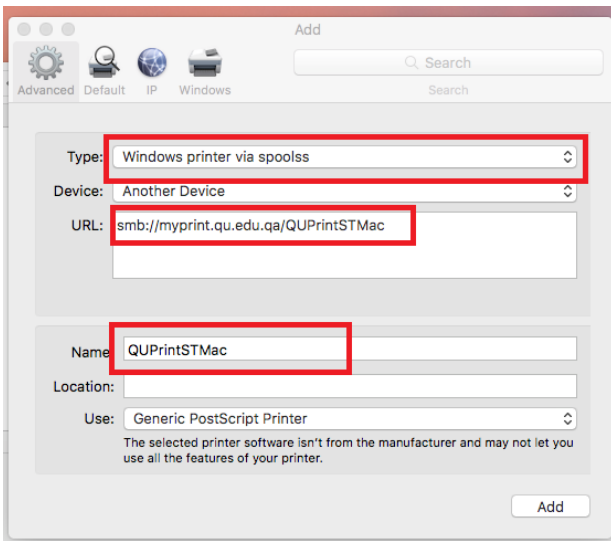
Choose **Select software search for Ricoh MP C5504 Ex PS** and **ADD** the printer

الخطوة 4: اختر النوع : **WINDOWS PRINTER VIA SPOOLSS**

رابط: **smb://myprint.qu.edu.qa/QUPrintSTMac**

اسم: **QUPrintSTMac**

اختر: **Select software search for Ricoh MP C5504 Ex PS** و **ADD** الطابعة

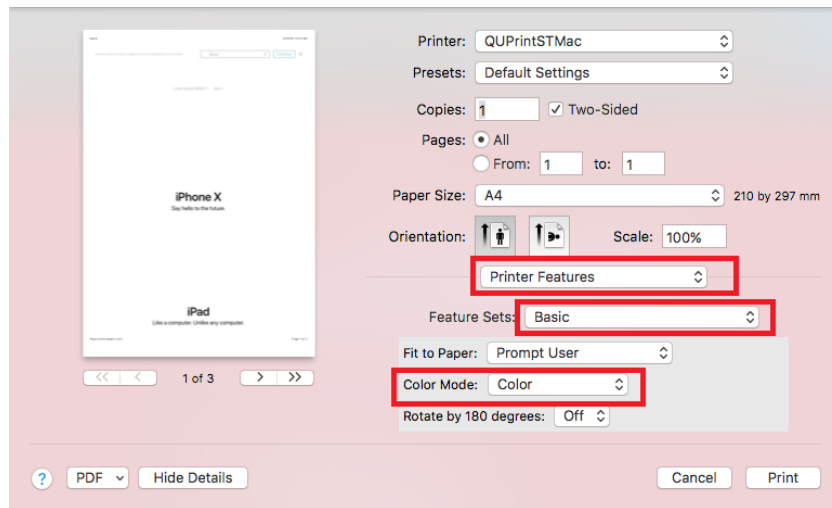


Step 5: Now give a Print Command and Choose **QUPrintSTMAC** from the printers and enter you **QU Credentials** when it prompts for the **Name and Password** (Optional: You can Check Remember this password if you want to save it)

خطوة 6: الآن قم بإعطاء أمر طباعة واختر **QUPrintSTMAC** من الطابعات وأدخل بيانات QU عندما يقوم بطلب الاسم وكلمة المرور (اختياري: يمكنك التحقق من تذكر كلمة المرور إذا كنت تريد حفظها)

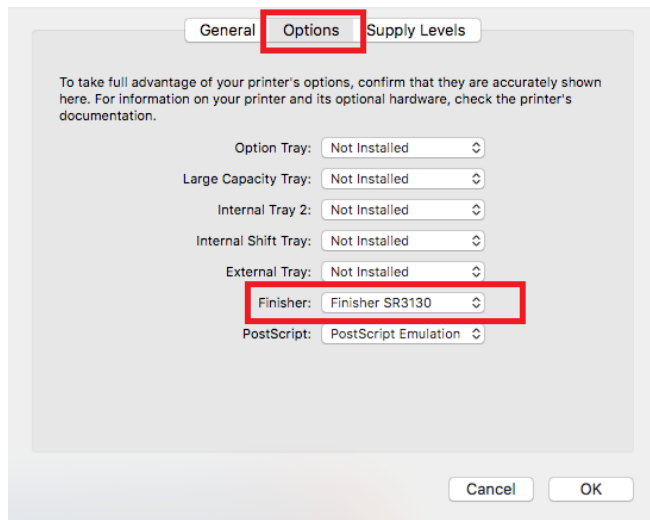
To change the color of your document

Choose **Print Features** > **Basic** > choose **Color or Black&White**



To use Stapling feature:

Go to **Options** and Choose **Finisher SR 3130**



While Printing Select **Print Features** > **Finishing** > Choose **Staple** options available

